

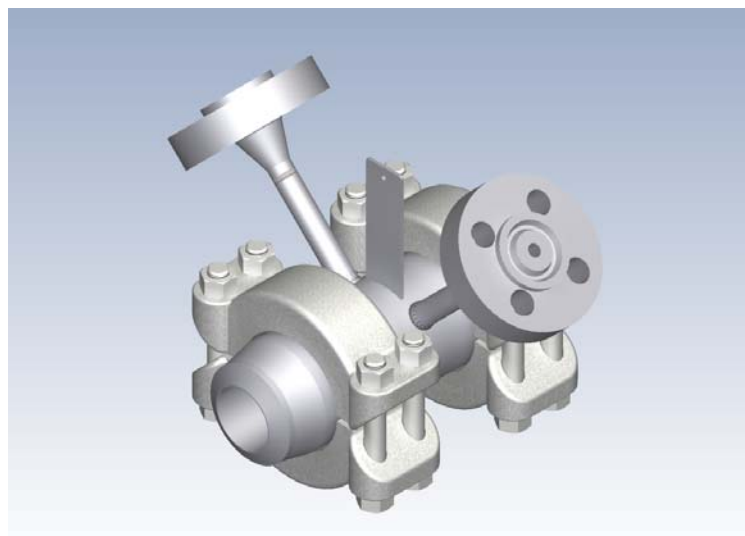
EMCO Orifice Plates Series MEGL for Clamp Connection

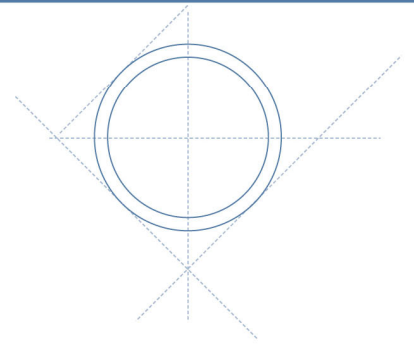
Principle

EMCO orifice plates are used as primary elements in flow measurement of liquid, gas and steam according to the differential pressure principle.

Construction

Design and calculation standards	: ISO 5167, ASME MFC-3M, Shell Flow Meter Engineering Handbook, AGA no. 3
Sizes	: 2" - 24"
Pressure rating	: 300 - 2500 lbs RF
Plate thickness	: 3 - 16 mm depending on plate size.
Bore (d)	: $d > 12,5$ mm
β (d/D)	: $0,2 < \beta < 0,75$
Material	: AISI 316, 22Cr. Duplex, 25Cr.Duplex, 6Mo and others on request.
Vent or drain hole	: On request.
Mounting style	: Clamped between hubs.

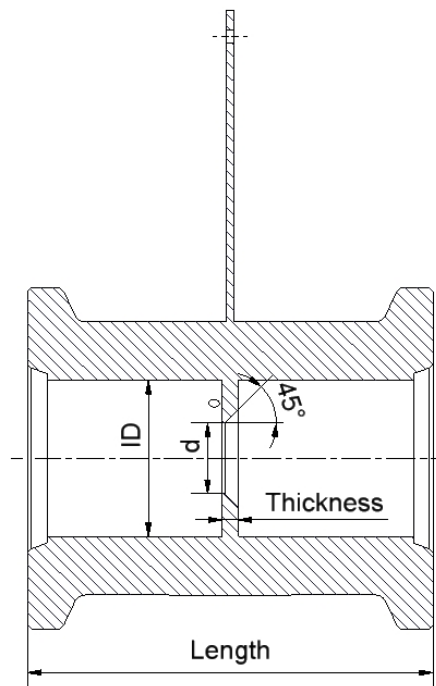


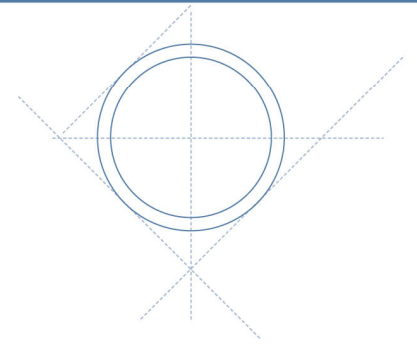


- Pressure taps : Threaded: ½" NPT int. (standard) or ½" BSP.
Flanged: ½" and ¾", 1500 and 2500 lbs RTJ.
- Tap location : At least 15° apart,
depending on size and pressure rating.
- Tapping style : Corner or flange tapplings.
- Handle : With name plate in AISI 316 with the
following inscription : TAG no., serial no.,
pressure rating, inner pipe diameter., bore,
material.

Technical Data

- Accuracy : +/- 0,6 % for $\beta < 0,6$ and equal to β for
 β values above 0,6.
- Pressure loss : Depending on β , for β equal to 0,6 : ca. 60 %
of the differential pressure measured.
- Limits for
Reynolds No : $Re > 1260 \times \beta^2 D$ according to ISO 5167
 $2000 < Re < 10^8$ according to ASME MFC-3M
- Length : Depending on hub size.





Size	Schedule / wall thick.	Hub size	Corner tap. Total length	Flange tap. Total length	Size	Schedule / wall thick.	Hub size	Corner tap. Total length	Flange tap. Total length
2"	80	2GR20	140 mm	190 mm	12"	60	12M120	240 mm	290 mm
	160	2GR16				100	12M112		
	XXS	2GR14				120	12M106		
	12,5 mm	2GR14				140	12M106		
	14,2 mm	2GR14				160	12M102		
3"	80	3GR27	140 mm	190 mm	14"	36 mm	12M102	270 mm	320 mm
	160	3GR25				45 mm	12M94		
	XXS	3GR23				50 mm	12M87		
	16 mm	3GR23				60	P130		
4"	80	4GR40	150 mm	200 mm	16"	100	P130	300 mm	350 mm
	120	4GR34				120	P120		
	160	4GR34				140	P120		
	XXS	4GR31				160	P112		
	20 mm	4GR27				55 mm	X14GR97		
6"	22,2 mm	4GR27	190 mm	240 mm	18"	65 mm	P94	320 mm	370 mm
	40	6GR62				60	S152		
	80	6GR62				100	S140		
	120	6GR56				120	S137		
	160	6GR52				140	S137		
8"	25 mm	6GR46	200 mm	250 mm	20"	160	S130	300 mm	350 mm
	28 mm	6Gr46				50 mm	S120		
	60	8GR82				55 mm	S120		
	100	8GR76				65 mm	S112		
	120	8GR72				60	U170		
10"	140	8GR72	210 mm	260 mm	24"	100	U160	320 mm	400 mm
	160	8GR67				120	U152		
	25 mm	8GR67				140	U144		
	25 mm	8GR72				55 mm	U140		
	28 mm	8GR72				60 mm	S134		
12"	100	10H94	210 mm	260 mm	16"	60	3V192	320 mm	370 mm
	120	10H94				100	3V180		
	140	10H94				120	3V170		
	160	10H84				160	3V170		
	30 mm	10H84				65 mm	3V152		