

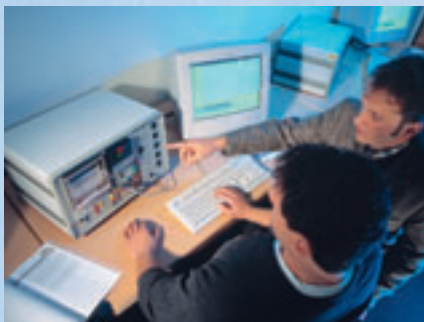
Controllers, Power Units and System Technology



Know-how is needed – *Services*



**Hands-on training:
Learning the theory ...**



... and putting it to the test.



**Close to the customer:
Repair and service**



Download facilities

On our website www.jumo.net, under “Support”, you can find a wealth of topical information on and around JUMO instruments, ready for downloading or ordering such as:

- technical data sheets and operating instructions
- specialist literature and brochures
- the latest software packages
- seminar programs and information about courses

Engineering

JUMO also offers project design for complete systems as a service package. This includes:

- listing the requirements
- drawing up a specification
- configuring the equipment and the visualization software
- professional commissioning and training of the operating personnel

Seminars and training

Know-how is not just needed to create JUMO products, but also for their later application. That's why we offer practical courses and seminars for users in our modern training center, as well as our own publications on aspects of measurement and control engineering:

- Control engineering
- Digital interfaces and bus systems for communication
- Electronic power units

Repair and service

We guarantee prompt service around the globe. Precise fault diagnosis enables us to ensure fast turn-round times for repairs. The telephone support service at our Fulda head office provides information and advice to our customers.

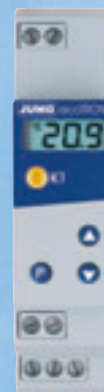
Remote maintenance

In addition to the classical range of services, JUMO also provides remote maintenance concepts.

As a supplement to the decentralized JUMO mTRON automation system and the SVS-2000N visualization software, we offer software packages for the latest instrument generation, that will enable plant manufacturers to service the plant at the end user via the worldwide telecommunications network:

- viewing current operational states
- carrying out system adaptations

JUMO ecoTRON – Digital thermostats and electronic Microstats
economical – cost-effective – simply perfect



Type	ecoTRON M 701060	ecoTRON T 701050
Dimensions	bezel 76 mm x 36 mm x 56 mm	90 mm x 22.5 mm x 60 mm
Mounting	in panel	DIN rail
Connections	screw terminals	
Enclosure protection	front IP 65, back IP 20	IP 20
Measurement inputs	Pt100, Pt1000 or KTY2x-6 in 2-wire circuit, configurable, thermocouples Fe-Con J, L, and NiCr-Ni K, configurable, current 0(4) – 20 mA, configurable, voltage 0 – 10 V	
Display	3-digit backlit LC display with 13mm digit height and special characters for °C, °F, h, min, s, active defrosting or heating phase	3-digit LC display with special characters for °C, °F
Output	1 changeover contact 10A/250V or 2 make contacts 10A/250V	1 changeover contact 10A/250V
Alarms	messages in display or via the 2nd relay output: low/high alarm limit temperature, service interval, timer message	messages in display: low/high alarm limit temperature
Supply	230V AC +10/-15 %, 48 – 63 Hz 115V AC +10/-15 %, 48 – 63 Hz 12 – 24V DC, 48 – 63 Hz/24V AC +10/-15 %, 48 – 63 Hz	
Features/extra functions	integrated defrosting function operating hours counter setup program	setup program
Approvals	CUL applied for	
Additional information	Data Sheet 70.1060	Data Sheet 70.1050



Type	1 iTRON 04 702044	2 iTRON 08, horizontal 3 iTRON 08, vertical 702043/702042	4 iTRON 32/702040 5 iTRON 16/702041	6 iTRON DR 100
Dimensions	96 mm x 96 mm x 70 mm	96 mm x 48 mm x 70 mm	48 mm x 48 mm x 100 mm 48 mm x 48 mm x 100 mm	22,5mm x 109mm x 124,8mm
Housing	plastic housing for panel mounting to DIN 43 700			DIN rail mounting
Connections	at the back, via pluggable screw terminals			screw terminals
Enclosure protection	front IP66 back IP20			IP 20
Controller type	2-state controller with limit comparator, 3-state controller			
Measurement inputs	Pt 100, Pt 1000, KTY11-6 resistance thermometers type L, U, T, K, N, S, R, B, thermocouples, DC current, DC voltage			
Display	7-segment display, 4 digits (green), digit height 10 or 20 mm, display span -1999 to +9999 digit, display in °C or °F			2-line alphanumeric LC display for indicating process value and setpoint display in °C or °F
Output	2 relays 3A/250V AC (make), 1 relay 3A/250V AC (make) 1 relay 3A/250V AC (make contact) 1 logic output 0/5V, 1 logic output 0/5V (as an alternative to logic input)			1 relay 5A/250V AC (changeover) and 1 logic output 0/5V, (optionally 0/12V); 2 relays 5A/250V AC (make) and 1 logic output 0/5V, (optionally 0/12 V)
Alarms	1 limit comparator (max.) with 8 functions			
Logic inputs	1 logic input for floating contacts (on iTRON 16/32: as an alternative to the logic output)			
Feedback	P, PD, PI, PID			
Supply	110 – 240V AC +10/-15%, 48 – 63Hz, or 20 – 53V AC/DC, 48 – 63Hz, or 10 – 18V DC, 48 – 63Hz			110 – 240 AC +10/-15%, 48 – 63 Hz, 20 – 53V AC/DC, 48 – 63Hz
Interface	programming interface for setup			
Features/ extra functions	self-optimization, ramp function, digital input filter with programmable filter time constant setup program, timer function			
Approvals	UL, FM 3545			CUL is applied for
Additional information	Data Sheet 70.2040	Data Sheet 70.2040	Data Sheet 70.2040	Data Sheet 70.2060

Compact microprocessor controller

Boiler controller LKR-96

JUMO iTRON 04 B

Clock-wise



Type	iTRON 04 B with timer 702050/1...	iTRON 04 B 702050/0...	iTRON 04 B with process value and setpoint 702050/2...	LKR-96 700201/...
Dimensions	96 mm x 96 mm x 68.5 mm			96 mm x 96 mm x 90.3 mm
Housing	plastic housing for panel mounting to DIN 43700			conductive plastic (ABS)
Connections	at the back, via pluggable screw terminals			at the back, via pluggable screw terminals, conductor cross-section up to 2,5 mm ² and ferrule (length 10 mm)
Enclosure protection	front IP65, back IP20			front IP65, back IP20
Controller type	2-state controller with limit comparator and timer	2-state controller	2-state controller with limit comparator	2- or 3-state controller, continuous controller (configurable)
Measurement inputs	Pt100 resistance thermometer, type L, K, J thermocouples			2 analog inputs, configurable input 1: resistance thermometer, Fe-Con J thermocouples, standard signals input 2: potentiometer
Display	Display 1: 7-segment display, red, 20 mm high, display in °C or °F, display span -99 to +999°C Display 2: 7-segment display, green, 14 mm high, for time indication	7-segment display, red, 20 mm high, display in °C or °F, display span -99 to +999°C	Display 1: 7-segment display, red, height 20 mm, display in °C or °F, display span -99 to +999°C Display 2: 7-segment display, green, height 14 mm for setpoint	4-digit display of process value and setpoint, parameter display, display of boiler and core temperatures
Setpoint adjustment	membrane keypad (Up and Down keys)			
Output	1 relay 5A/250V AC (changeover) 2 relays 5A/250V AC (make)	1 relay 5A/250V AC (changeover)	1 relay 5A/250V AC (changeover) 2 relays 5A/250V AC (make)	as standard: 2 relays, 3A/230V (make), 2 x make, 1 x changeover, F _V / Δcooking
Alarms	1 limit comparator with 8 functions	–	1 limit comparator with 8 functions	2 limit comparators with 8 functions, combination alarm
Logic inputs	–			
Feedback	P, PD, PI, PID			
Supply	110 – 240V AC +10/-15 %, 48 – 63Hz, or 20 – 53V AC/DC, 48 – 63Hz			110 – 240V AC +10 / -15 %, 48 – 63Hz
Interface	programming interface for setup			LON interface FTT10A, 78kbaud
Features / extra functions	timer function: with adjustable time 1s to 9 hours and 59 min and separate display for ambient temperatures up to 60°C, setup program	setup program, for ambient temperatures up to 60°C	setup program, for ambient temperatures up to 60°C, separate display for setpoint	real-time clock: for starting at any time, combination alarm function, delta cooking and F-value cooking, 1 analog output, interval spray, available with 1 or 10 process steps, 2 make/changeover contacts
Approvals	UL, CSA in preparation			UL, FM 3545
Additional information	Data Sheet 70.2050			Data Sheet 70.0201

Microprocessor controller series **JUMO** dTRON 300

...made for global success



Type	❶ JUMO dTRON 316 703041/...	❷ JUMO dTRON 308 vertical ❸ JUMO dTRON 308 horizontal 703042/703043	❹ JUMO dTRON 304 703044/...
Dimensions	48 mm x 48 mm x 90 mm	48 mm x 96 mm x 90 mm vertical or horizontal format	96 mm x 96 mm x 90 mm
Housing	plastic housing for panel mounting to DIN 43700 with plug-in controller module and gold-plated plug contacts		
Connections	at the back via screw terminals, max. conductor cross-section: 1,5 mm² with ferrule		
Enclosure protection	to EN60529, front IP65, back IP20		
Controller type	2-state/3-state controller, modulating or continuous controller, program generator or program controller is freely configurable		
Measurement inputs	a maximum of two analog inputs can be freely configured, resistance thermometer/transmitter, thermocouples: current/voltage, customized linearization		
Setpoint adjustment	membrane keypad (up and down keys), four internal setpoints, external setpoint input		
Display	multicolored LCD display, 4-digit 7-segment display, red, configurable (factory setting: process value) 4-digit 7-segment display, green, configurable (factory setting: setpoint), switching status indication, active setpoint SP1, SP2, SP3, SP4, two-place 16-segment display, green, for the unit °C/°F and characters for h, min and %		
Output	two relays as standard: 3A/230V (make contact), two logic outputs 0-12V (18V)	two relays as standard: 3A/230V (changeover contact), two logic outputs 0-12V (18V), voltage output for transmitter 23V at 30mA	
	additional outputs can be retrofitted through options: – relay (changeover 8A) – double relay (2x make contact 3A) – analog output – solid-state relay 1A		
Alarms	four limit comparators with 8 functions		
Logic inputs	up to four logic inputs via floating contacts	up to 6 logic inputs via floating contacts	
Feedback	P, I, PD, PI, PID, additionally self-optimized step response or oscillation method		
Supply	110 – 240V AC +10/-15%, 48 – 63Hz 20 – 53V AC/DC, 48 – 63Hz	110 – 240V AC +10/-15%, 48 – 63Hz 20 – 53V AC/DC, 48 – 63Hz voltage output for transmitter 23V/30mA	
Interface	RS 422/485 MODbus protocol, MODbus-integer or PROFIBUS-DP, setup interface as standard		
Features/ extra functions	ratio, difference or humidity control, up to three options can be retrofitted, math and logic functions, ramp and program function, a maximum of eight segments, two timers, setup program		
Approvals	CUL, DIN 3440 (for dTRON 308), Gost, (all in preparation)		
Additional information	Data Sheet 70.3041		

Microprocessor controllers/programmers **JUMO** DICON 400/500 and 401/501

The flexible ones



Type	DICON 400 (ver./hor.)	DICON 500	DICON 401 (ver./hor.)	DICON 501
Dimensions	96 mm x 48 mm x 130 mm vertical or horizontal format	96 mm x 96 mm x 130 mm	96 mm x 48 mm x 130 mm vertical or horizontal format	96 mm x 96mm x 130 mm
Housing	polycarbonate housing with plug-in controller module and gold-plated plug contacts			
Connections	at the back via screw terminals, conductor cross-section up to 2.5 mm² and ferrule (10 mm long)			
Enclosure protection	front IP65, back IP20, to EN 60529			
Controller type	freely configurable as 1- or 2-state controller, modulating, continuous or actuating controller		program generator or program controller with controller functions as for DICON 400/500	
Measurement inputs	two analog inputs	four analog inputs	two analog inputs	four analog inputs
	configurable as resistance thermometer, resistance transmitter, thermocouple, standard signals, heater current			
Setpoint adjustment	membrane keypad, external setpoint selection, setpoint profile by program editor, program controller / generator, 4 internal setpoints selectable through logic functions, interface or setup program			
Display	two 4-digit 7-segment displays and one 8-character matrix display for showing different, freely programmable functions with two display configurations			
Output	max. 3 outputs – relay – solid-state relay – logic output 5 V/22 V – analog output – voltage output for 2-wire transmitter	max. 6 outputs – relay – solid-state relay – logic output 5 V/22 V – analog output – voltage output for 2-wire transmitter	max. 3 outputs – relay – solid-state relay – logic output 5 V/22 V – analog output – voltage output for 2-wire transmitter	max. 6 outputs – relay – solid-state relay – logic output 5 V/22 V – analog output – voltage output for 2-wire transmitter
Extra contacts	connection of one external relay module with 8 relays			
Alarms	8 limit comparators with 8 functions			
Logic inputs	maximum of 8 logic inputs via floating contacts			
Feedback	P, I, PD, PI, PID action, individually adjustable for direct or reverse action 2 parameter sets with self-optimization			
Supply	110 – 240V AC +10 %/-15 %/ 48 – 63Hz, 20 – 53V AC/DC 48 – 63Hz			
Interface	RS422/485 electrically isolated, MOD/JBus protocol, PROFIBUS-DP			
Features/ extra functions	– ramp and program function, max. 8 segments – setup-program		– 10 programs with a total of 100 segments – setup software with program editor – real-time clock – 8 control contacts, tolerance band signal – program end signal	
	math and logic module, fuzzy logic, inputs and outputs (50V) electrically isolated			
Approvals	UL	ABS, BV, DIN 3440, DNV, GL, LRS, UL	UL	ABS, BV, DIN 3440, DNV, GL, LRS, UL
Additional information	Data Sheet 70.3570	Data Sheet 70.3570	Data Sheet 70.3580	Data Sheet 70.3580

JUMO IMAGO 500 – Multichannel process and program controller

The all-rounder



Type	IMAGO 500 703590/...
Dimensions	bezel size 144mm x 130mm x 170mm, mounting dimensions 92 mm x 92mm
Housing	housing and back panel: metal for panel mounting to DIN 43700 bezel: plastic ULV0
Connections	at the back via pluggable screw terminals, conductor cross-section up to 2.5mm ² and ferrule (10 mm long)
Enclosure protection	front IP65, back IP20 to EN 60529
Controller type	up to 8 universal control channels: 1- or 2-state controller, modulating controller, continuous controller, continuous controller with integral actuator driver
Measurement inputs	a maximum of 8 universal analog inputs, individually pluggable for resistance thermometer, thermocouple, standard signals, resistance transmitter and heater current
Setpoint adjustment	membrane keypad, external setpoint selection, setpoint profile through program editor of the program controller/generator, 4 internal setpoints for each channel, selectable via logic functions, interface or setup program
Display	5" (12.7 cm) color screen, process-specific texts and pictures, bar graph display with 27 colors, resolution 320 x 240 pixels, instrument texts settable in English, German and French as well as in other languages
Outputs	up to 6 slots for the following plug-in modules: 2 relays (make contact), 1 relay (changeover contact), 2 logic outputs 0/5V, 1 logic output 0/22V, 1 solid-state relay, 1 analog output, 1 supply for a 2-wire transmitter
Extra contacts	up to 2 external relay modules with 8 changeover contacts or 8 logic outputs 0/12V
Alarms	16 limit comparators with time and acknowledgement functions
Logic inputs	6 logic inputs for floating contacts
Feedback	P, I, PD, PI, PID action, individually adjustable for direct or inverse sense of operation 2 parameter sets for each control channel, self-optimization according to oscillation method or step response
Supply	110 – 240V AC +10/-15 %, 48 – 63Hz, 20 – 30V AC/DC, 48 – 63Hz
Interfaces	interface I: – Setup and RS422/485 with MODbus/Jbus protocol interface II: – PROFIBUS-DP – RS422/485 with MODbus/Jbus protocol
Features/extra functions	cascade controller/C-level control, 50 programs with 1000 segments, math and logic functions, alarm list, recording function with evaluation software, Teleservice via external modem, cycle time from 50 msec, self-optimization using the oscillatory and step-response methods, commissioning software start-up
Approvals	UL (pending)
Additional information	Data Sheet 70.3590

Safety temperature monitor/limiter

The watchdogs



Type	(S)TBOW(t)-54	701140/... (TB / TW)
Dimensions (L x W x H)	54 mm x 70 mm x 110 mm	22.5 mm x 109 mm x 124.8 mm
Connections	screw connections	screw terminals
Enclosure protection	IP20 (EN 60529)	IP20
Function	safety temperature monitor, safety temperature limiter	temperature limiter, temperature monitor
Measurement inputs	Pt100 resistance thermometer, thermocouples type K, S, B, L	freely configurable for resistance thermometer, thermocouple, current and voltage signals
Setpoint adjustment	analog rotary knob with lead-sealable cap	–
Output	relay with changeover contact 2 A/230 V	relay output (changeover contact) logic output (voltage/current 4.5 V/20 mA)
Supply	24 V AC +10/-15 %, 48 – 63 Hz 115 V AC +10/-15 %, 48 – 63 Hz 230 V AC +10/-15 %, 48 – 63 Hz	20 – 53 V AC/DC, 48 – 63 Hz 110 – 240 V AC +10/-15 %, 48 – 63 Hz
Features/extra functions	internal or external reset button, minimum/maximum function, DIN rail mounting, lead-sealable cover	freely configurable through setup program or keys, only one instrument for TB and TW, alphanumeric LC display, 17 linearization options, pre-alarm can be set as absolute or relative to limit value, differential measurement and monitoring
Approvals	DIN 3440, GL, GL, (S)TB/(S)TW with thermocouples as per IEC 61 508, SIL 3, (S)TB/(S)TW or TB/TW with resistance elements as per IEC 61 508, SIL 2	DIN 3440, UL
Additional information	Data Sheet 70.1130	Data Sheet 70.1140

JUMO IMAGO F3000 – Process control for the meat industry

The specialist



Type	700101
Dimensions	307 mm x 165 mm (vertical or horizontal), depth behind panel 107.6 mm
Housing	plastic housing for panel mounting to DIN 43700
Connections	at the back via pluggable screw terminals, conductor cross-section up to 2.5 mm ² and ferrule (10 mm long)
Enclosure protection	front IP67/back IP20 to EN 60529
Controller type	4 universal controller channels, 1- or 2-state controller, modulating controller, continuous controller, continuous controller with integral actuator driver
Measurement inputs	8, optionally as Pt100 resistance thermometer, type L, J, K thermocouples, DC voltage, DC current
Setpoint adjustment	membrane keypad, setpoint profile through program generator, interface
Display	5" (12.7 cm) color screen, 27 colors, resolution 320 x 240 pixels and four 4-digit, 12 mm-high 7-segment displays, instrument texts in English, German, French, other languages are available, process-specific text and pictures
Outputs	max. 35 relays max. 4 analog outputs
Alarms	8 limit comparators with timer functions
Feedback	P, I, PD, PI, PID action, individually selectable for direct or reverse action 8 parameter sets with self-optimization
Supply	110 – 240 V AC +10/-15 %, 48 – 63 Hz 20 – 30 V AC/DC, 48 – 63 Hz
Interfaces	MOD-Bus, PROFIBUS-DP and setup
Features/extra functions	menus are freely editable in basic status and automatic mode, freely assignable function keypad, up to 99 programs with 99 segments each, Plug & Play memory for saving the configuration data and transfer of programs, 16 freely editable logic combinations, four freely editable math functions, recording function with evaluation software, Teleservice via modem
Approvals	UL
Additional information	Data Sheet 70.0101

Thyristor power switches

The tough guys

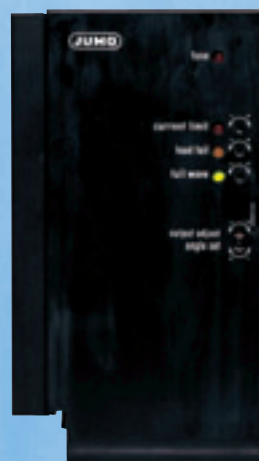


Type	❶ TYA 432-45/25, 265 ❷ TYA 432-45/50, 530	❸ TYA 432-100/30, 265 ❹ TYA 432-100/30, 660	❺ TYA 432-100/45, 660 ❻ TYA 432-100/3, 20, 660	
Dimensions (W x H x D)	45 mm x 58.2 mm x 29 mm		❸ 22.5 mm x 81.7 mm x 102.6 mm ❹ 45 mm x 81.7 mm x 102.6 mm	❹ 45 mm x 81.7 mm x 102.6 mm ❻ 45 mm x 81.7 mm x 102.6 mm
Load voltage	❶ 24 – 265 V _{rms} ❷ 48 – 530 V _{rms}		❸ 24 – 265 V _{rms} ❹ 48 – 660 V _{rms}	42 – 660 V _{rms}
Load current (max.)	❶ 25 A _{rms} ❷ 50 A _{rmsf}		❸ 30 A _{rms} (T _a = 25 °C) ❹ 45 A _{rms} (T _a = 25 °C)	❹ 45 A _{rms} (T _u = 25 °C) ❻ 20 A _{rms} (T _u = 25 °C)
Load current (min.)	150 mA _{rms}			
Control voltage	3 – 32 V DC		4 – 32 V DC	3 – 32 V DC
Peak off-state voltage	650 V _{pk}		❸ 600 V _{pk} ❹ 1200 V _{pk}	1200 V _{pk}
Operating mode	thyristor zero-crossing switching			
Electrical isolation	by optocouplers between the control and power sections, insulation voltage 4 kV			
Permissible ambient temperature	–20 to +70 °C (taking the the derating curve into account)			
Electrical connection	via screw terminals			
Housing	Noryl GFN1		PBT FR	
Enclosure protection	IP20			
Weight	60 g		200 g	❸ 360 g ❻ 380 g
Features/ extra functions	overvoltage protection through integrated varistor, LED display for control input		with integrated heatsink for mounting on DIN rail or screw fixing, can also be supplied as a 3-phase model, LED display for control input	❸ with integrated heatsink for mounting on DIN rail or screw fixing, can also be supplied as a 3-phase model, LED display for control input ❹ 3-phase version is standard
Approvals	UL/CSA			
Additional information	Data Sheet 70.9010		Data Sheet 70.9020	

Power converter

Thyristor power unit

The tough guys



Type	709050 (JUMO IPC)	TYA-110/3, 25...100...150...250
Dimensions (L x W x H)	272 mm x 260 mm x 175 mm (70A) 344 mm x 300 mm x 204.5 mm (100/200A)	195 mm x 110 mm x 152 mm (25/50 A) 195 mm x 125 mm x 170 mm (75/100 A) 220 mm x 150 mm x 280 mm (150/250 A)
Load voltage	20, 60, 90, 120, 150, 210, 380V DC others on request	24, 42, 115, 230, 265, 400, 460, 500V AC
Load current	70 A \simeq DC/100 A \simeq DC/200A DC	25, 50, 75, 100, 150, 250A
Supply for power section	115, 230, 400V AC	same as load voltage
Supply for control section	115, 230V AC	same as load voltage
Operating mode	amplitude control	burst-firing or phase-angle operation
Circuit variation	single-phase operation	
Load type	resistive load	resistive and resistive-inductive load (BS 1,2T)
Control signal	0(4) – 20mA 0(2) – 10V 0(1) – 5V external 5 k Ω potentiometer	0(4) – 20mA, 0(2) – 10V 0(1) – 5V, 0/10V, 0/5V, 0/20mA 5 k Ω potentiometer floating contact
Control accuracy	supply variations from –20 % / +15 % are stabilized with an accuracy of ± 0.5 %	
Permissible ambient temperature	0 to 45 °C, max. 60 °	5 to 40 °C to EN 60721-3-3
Enclosure protection	IP00 to EN 60529	IP00 to EN 60529, heatsink is grounded
Protection Class	Class 1, with isolation of the control circuits for connection to SELV circuits	
Weight	approx. 9kg: 70A, approx. 17kg: 100A/200A	depending on load current: 2.8kg or 9kg
Ventilation	forced ventilation	natural convection
Features / extra functions	low-voltage heater elements can be operated directly off the mains supply without requiring a reduction transformer, minimum harmonics in the supply network of the plant, light weight, low control reactive power, subordinate control loop comes as standard, partial-load failure, current limiting, load output	two single-phase units can be wired up as an economy circuit for burst-firing operation, free-running economy circuit for resistive loads, master-slave economy circuit for resistive or transformer loads, firing pulse inhibit, set basic load, subordinate control loop, supply voltage monitoring, partial-load failure, current limiting, load output
Accessories	supply filter and storage inductor are required	mounting plate for wall fixing
Additional information	Data Sheet 70.9050	Data Sheet 70.9040

Decentralized automation system JUMO mTRON – *The system components*

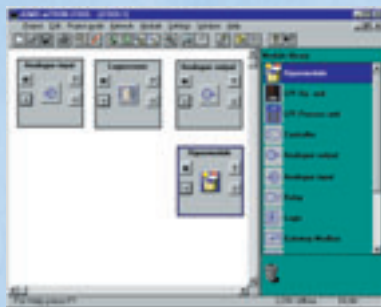
Process visualization software SVS-2000N – *The control center*



Module



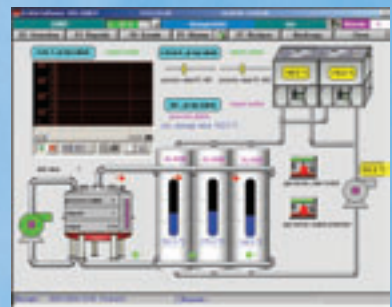
Operating unit



mTRON iTOOL



Group diagram



Flow diagram

- savings in installation and cabling
- different modules can easily be combined
- no need to familiarize yourself with complex network structures
- simple and transparent project design and commissioning
- PROFIBUS networking via gateway
- operating unit
- analog input module
- controller module
- relay module and analog output module
- communication module
- logic module
- JUMO mTRON iTOOL project design software

Additional information: [Brochure 70035 GB](#)

- for networking of JUMO interfaceable process equipment with a PC
- simple and fast creation of applications
- extensive library with predefined graphic elements
- transparent operation
- extensive documentation function with continuous and batch evaluation
- alarm and event list
- fast and simple start-up through installation menu
- password protection
- historical and real-time trend
- network-capable
- connection of bar code scanners
- remote alarm (option)

Additional information: [Brochure 70052 GB](#)

Fax reply

(for fax number see address below)

PR 70040 GB "Controllers, Power Units and System Technology"

Please send me the following data sheets:

- | | |
|---|---|
| <input type="checkbox"/> Data Sheet 70.0101 | <input type="checkbox"/> Data Sheet 70.3041 |
| <input type="checkbox"/> Data Sheet 70.0201 | <input type="checkbox"/> Data Sheet 70.3570 |
| <input type="checkbox"/> Data Sheet 70.1050 | <input type="checkbox"/> Data Sheet 70.3580 |
| <input type="checkbox"/> Data Sheet 70.1060 | <input type="checkbox"/> Data Sheet 70.3590 |
| <input type="checkbox"/> Data Sheet 70.1130 | <input type="checkbox"/> Data Sheet 70.9010 |
| <input type="checkbox"/> Data Sheet 70.1140 | <input type="checkbox"/> Data Sheet 70.9020 |
| <input type="checkbox"/> Data Sheet 70.2040 | <input type="checkbox"/> Data Sheet 70.9025 |
| <input type="checkbox"/> Data Sheet 70.2050 | <input type="checkbox"/> Data Sheet 70.9040 |
| <input type="checkbox"/> Data Sheet 70.2060 | <input type="checkbox"/> Data Sheet 70.9050 |
| <input type="checkbox"/> Data Sheet 70.3011 | |

☐ Send me a quotation

Please send me brochures on:

- ☐ "JUMOmTRON" (PR 70035 GB)
- ☐ "SVS-2000N" (PR 70052 GB)
- ☐ "Thyristor power units, thyristor power switches"
(PR 70044 GB)

Please send me the following information:

- ☐ **Product Guide** (PR 00046 GB)
- ☐ **sectional catalog:**
"Controllers, Power Units and System Technology"
- ☐ **the book: "Control Engineering –**
A practical guide" (nominal charge 14,- EUR)
- ☐ **CD-ROM "Products"**

☐ Please arrange a personal discussion

with

Phone

Date / time

Sender:

Name

Company

Industry

Address

Phone

Fax

e-mail

Date stamp and signature



JUMO GmbH & Co. KG

Street address:
Moltkestraße 13 - 31
36039 Fulda, Germany
Postal address:
36035 Fulda, Germany
Phone: +49 661 6003-0
Fax: +49 661 6003-607
e-mail: mail@jumo.net
Internet: www.jumo.net

JUMO Instrument Co. Ltd.

JUMO House
Temple Bank, Riverway
Harlow, Essex CM 20 2TT, UK
Phone: +44 12 79 63 55 33
Fax: +44 12 79 63 52 62
e-mail: sales@jumo.co.uk
Internet: www.jumo.co.uk

JUMO PROCESS CONTROL INC.

885 Fox Chase, Suite 103
Coatesville PA 19320, USA
Phone: 610-380-8002
1-800-554-JUMO
Fax: 610-380-8009
e-mail: info@JumoUSA.com
Internet: www.JumoUSA.com

7.05/00346839